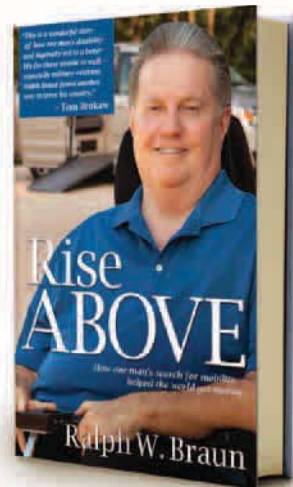


Learn more about BraunAbility and the birth of the mobility industry from Ralph Braun's inspirational book "Rise Above." Sales of the book will support The Ralph Braun Foundation, which recognizes that every individual has the right to accessible transportation.



## more of the experience

[braunability.com](http://braunability.com) As the leader of the mobility industry, The Braun Corporation understands the importance of a vehicle that meets your needs and lifestyle. Our BraunAbility wheelchair accessible vans and wheelchair lifts will get you on the road and on with your life.



800.THE.LIFT / 800.843.5438 / [braunability.com](http://braunability.com)

All illustrations, descriptions and specifications in this brochure are based on the latest product information at the time of publication. The Braun Corporation reserves the right to make changes at any time without notice.  
©2011 The Braun Corporation 37218



TOYOTA SIENNA / BRAUNABILITY RAMPVAN  
**DRIVING FREEDOM**



# FREEDOM



Sister Karen Zielinski has too much going on to let a mobility challenge slow her down. Whether she's presenting a lecture on coping with chronic disease or attending a Detroit Red Wings hockey game, Karen relies on her BraunAbility wheelchair van to take her there. She just drives her scooter up the ramp, transfers into the driver's seat, and hits the road.

As someone who has lived with multiple sclerosis for over 35 years, Karen knows how unpredictable life can be. But no matter how difficult the road ahead may be, she's put her faith in the most-respected, most experienced mobility provider in the industry.

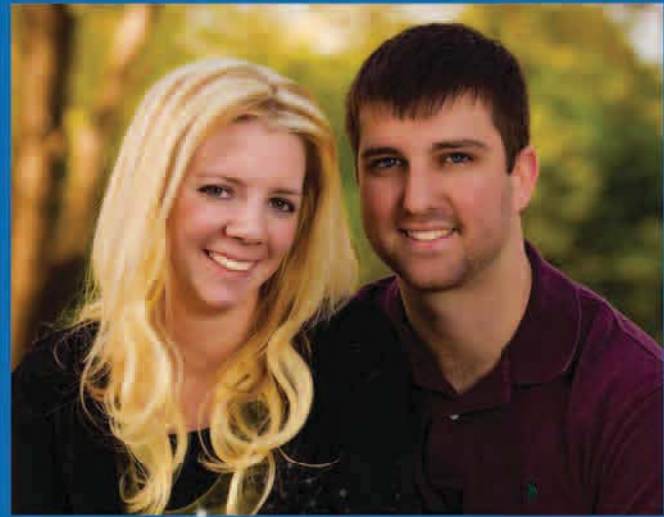




## DRIVING

Keeping up with the Utz family isn't easy. Parents Amy and Chris are constantly on the run with children Abbie, Chloe and Michael. Whether they're off to school, therapy or grandma and grandpa's house, nothing slows this family down. Luckily their BraunAbility wheelchair van is designed to keep up with growing families like this one. With plenty of interior space, flexible seating options and a reliable BraunAbility dealer just down the road for any service needs, they've put their trust in the right company.

So what's the future hold? Well, BraunAbility has its work cut out. Michael informed us he'll be a race car driver when he grows up...and we're not sure there's a wheelchair van on the road that can keep up with this little guy.



## DRIVING FREEDOM

She had the perfect dress, the perfect honeymoon destination and, of course, the perfect fiancé.

A spinal cord injury just before Rachele

Friedman's wedding put those plans on hold...

but not for long. With the help of her BraunAbility

Sienna Rampvan XT, she and her fiancé Chris

have the perfect ride as they start their new lives

together. Whether it's a trip down the aisle or a

trip across the country, this wheelchair van is in it

for the long-haul...just like the newlyweds.





# necessity is the mother of invention



**1962**  
Ralph Braun, founder, built his first motorized wheelchair in his cousin's farm shop in 1962. He never dreamed that the company would turn into a world-renowned industry leader and improve thousands of lives.



**1966**  
Ralph equips an old Post Office Jeep with a custom-built hydraulic tailgate lift along with homemade hand controls.



**1970**  
Chrysler introduces the full-size van. Ralph builds the precursor to the Lift-A-Way wheelchair lift to fit this revolutionary vehicle.

**1972**  
Save-A-Step Manufacturing Company incorporates as The Braun Corporation with five employees.



**1979**  
A devastating fire sweeps through the Braun Corporate Headquarters. The aftermath reveals an office and production facility gutted by the blaze.



**1984**  
An innovative Swing-A-Way wheelchair lift is introduced to the public.

**1981**  
Braun introduces the Chair Topper car-top wheelchair carrier.



To meet the growing demand, Braun invests heavily in new manufacturing technologies and facilities. A third plant opens, dramatically increasing Braun's capabilities.

**1989**

A modern vehicle assembly building is opened, housing production lines for the Entervan and Paratransit vans.

**1994**

**1991**  
The Braun Entervan is introduced, offering unparalleled ease of access for wheelchair users. This revolutionary vehicle soon becomes the flagship of Braun's mobility line.



**2003**  
Braun continues to invest in state-of-the-art manufacturing technology, building the majority of components in-house for strict quality control.



**BraunAbility**



The BraunWest facility is opened in Phoenix, AZ, improving service and support to the growing dealer network in western states.

**2010**



**2008**  
The BraunAbility brand is introduced for Braun's consumer mobility products, now available at over 200 dealer locations nationwide.



# conversion features second to none

## SEATING OPTIONS

Removable seating enables you to drive or ride in the front passenger position, or you can choose to ride in the middle of the van. Step-and-Roll seating makes it easy to remove and install the seats as needed.

## INTERIOR FIT and FINISH

The spacious interior is designed by wheelchair users for wheelchair users. Every detail is well thought out, maximizing the usable floor space to accommodate the largest of wheelchairs and scooters. Interior control switches are conveniently placed throughout your vehicle, putting you in command as you travel.



### Rampvan® Xi

The Rampvan Xi conversion is available for those who prefer an in-floor ramp option and don't need the extra headroom of the Rampvan XT.



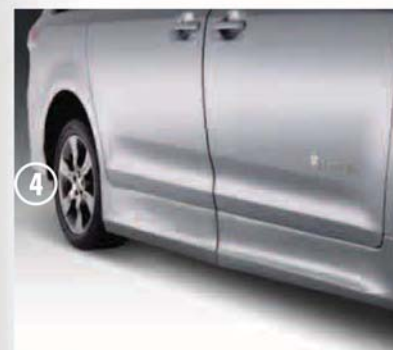
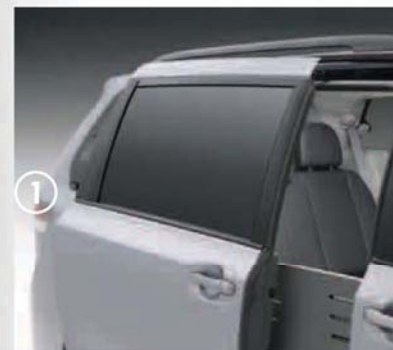
## EASY AS 1-2-3! TRANSFORMS ALL THREE AT THE TOUCH OF A BUTTON

The door, ramp and kneeling functions can be activated by the van's original key remote control. Just press the sliding door button, hold briefly, and everything operates automatically.



### REAR ENTRY

The Vision rear-entry conversion offers an economical solution for your mobility.



### 1 AUTOMATIC DOOR

The original Toyota door operator mechanism reliably opens the vehicle's sliding door at the touch of a button.

### 2 KNEELING SUSPENSION

As the side door opens, the van's rear suspension "kneels," lowering the slope of the ramp for easier entry and exit.

### 3 AUTOMATIC RAMP

The lightweight aluminum foldout ramp extends and retracts to allow quick access to the interior.

### 4 GROUND EFFECTS

Even with the floor lowered a full 10 inches, the vehicle maintains its sleek styling with custom-molded ground effects on the exterior.

### 5 REAR BENCH SEAT

A Braun-designed footrest adds comfort for backseat passengers. When not in use, it automatically folds out of your way.

### 6 REAR CARGO

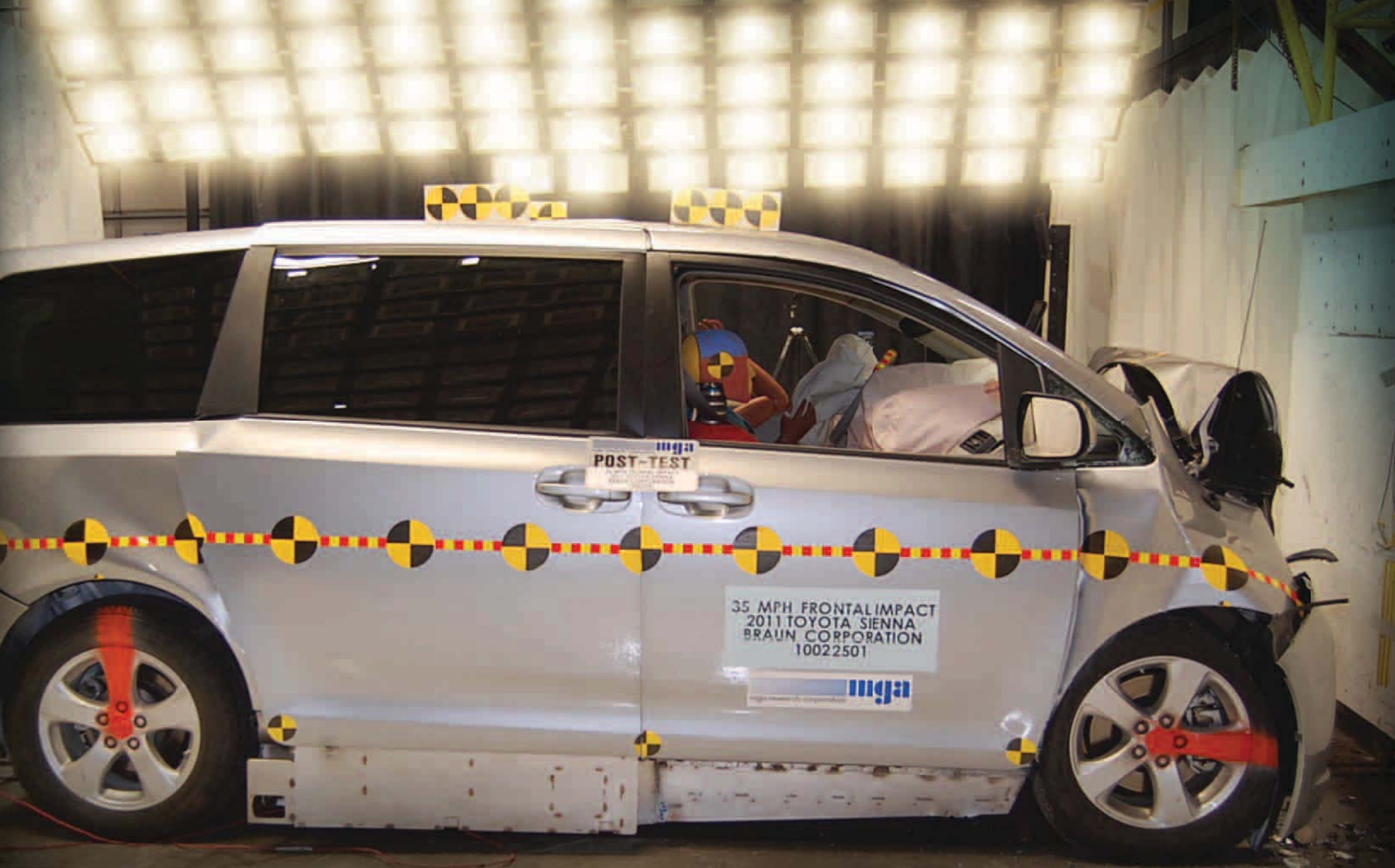
Even more storage is available with BraunAbility's exclusive third row Roll-and-Tumble seating and a spare tire that stores below the floor.

LET FREEDOM ROLL

braunability.com Visit our website today for more details and interaction.

more of the experience





**WE'RE NO DUMMY WHEN IT COMES TO YOUR SAFETY**

**IMPACT TESTED TO FMVSS STANDARDS**

BraunAbility products are engineered to the highest standards. We invest in industry-leading safety testing that often exceeds government safety standards.

**1 GAS TANK**

BraunAbility engineers designed a heavy-gauge steel safety cage that completely surrounds the fuel tank, channeling forces around it in the event of a collision.

**2 CONTROLLER BRAIN**

This BraunAbility controller is a high-tech device that operates the ramp system, kneeling feature and more. It is hassle-free thanks to built-in diagnostic software.

**3 WIRING HARNESS**

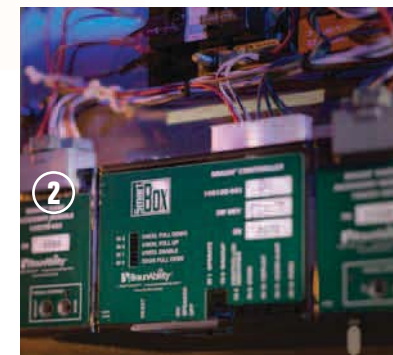
Another way we ensure reliable, trouble-free operation is by utilizing factory-original Toyota connectors for secure connections in all our wiring harnesses.

**4 FUEL & BRAKE LINES**

The conversion's fuel and brake lines are manufactured to higher standards. Approved by the OEM, this leads to maximum safety and performance over the life of the vehicle.

**5 MANUFACTURING**

BraunAbility wheelchair vans are built on a state-of-the-art assembly line, ensuring consistent quality you can rely on to get you where you need to go, day in and day out.



**3-YEAR WARRANTY**

BraunAbility backs the quality craftsmanship of its minivans with an exclusive 3-year, 36,000-mile warranty and a 5-year, unlimited-mile rust-through metal protection on every vehicle that leaves the factory.

[braunability.com](http://braunability.com) Visit our website today for more details and interaction.

**more of the experience**



**strength through smart engineering**

# the time has come to get moving

## 1 ENGINE

There's no reason a wheelchair van can't have the sporty feel of a performance car. The Rampvan offers responsive power in two forms: a new fuel-efficient 2.7-liter inline-4 engine and an available 266-hp 3.5-liter V6.

## 2 ENTERTAINMENT SYSTEM

Choose from a 16.4 inch screen, DVD player, video game console, 120V AC outlets, and a Bose® stereo system with surround sound.

## 3 ON-WHEEL CONTROLS

Thoughtful placement of controls on the steering wheel make it easy to be in complete command of your wheelchair van.

## MILEAGE SUMMARY

Aerodynamics and engine efficiency help Sienna deliver the top combined MPG ratings of most minivans on the market today.



SE leatherette with sport fabric inserts in Dark Charcoal

LE easy-clean fabric in Bisque

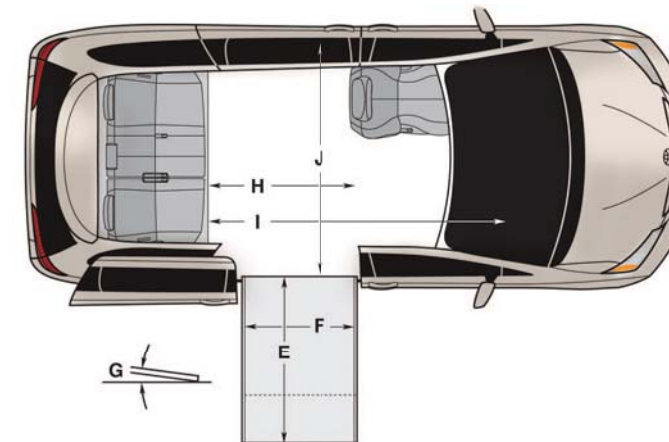
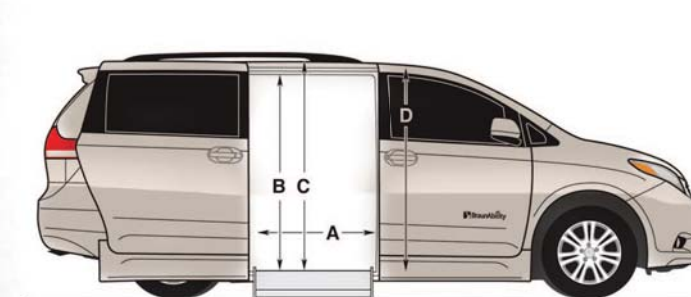
LE easy-clean fabric in Light Gray

XLE textured leather in Bisque

XLE textured leather in Light Gray

Limited two-tone leather in Bisque

Limited two-tone leather in Light Gray



## CONVERSION DIMENSIONS

	Rampvan® XT (Foldout Ramp)	Rampvan® Xi (Infloor Ramp)
Door Opening Usable Width (Slide Door)	A 33"	31"
Door Opening Usable Height (Slide Door)	B 56"	54-1/4"
Interior Height at Center of Van*	C 60"	58"
Interior Height at Driver & Passenger Position**	D 59"	57-1/2"
Ramp Length	E 52"	52"
Ramp Width (Usable Clear Opening)	F 29-1/4"	30-1/4"
Ramp Angle (With Vehicle Kneeled)	G 7.3°	8.8°
Interior Floor Length (Behind Front Seats)	H 51"	45"
Overall Interior Floor Length (Flat Area)	I 82-1/2"	84"
Interior Width at B Pillars	J 61-1/2"	60"

\* Deduct 2-3/4" off of Interior Height for Applications with Overhead DVD/Rail System

\*\* Deduct 3" off of Interior Height for Applications with Moon Roof

Due to manufacturing tolerances both with the OEM vehicle and the conversion components, all dimensions may vary slightly from those shown.

## STANDARD FEATURES

- Keychain Remote Control
- Kneeling Rear Suspension
- Removable Passenger Seat
- Removable Driver Seat
- Automatic Passenger Sliding Door
- Automatic Foldout Ramp
- Lowered Floor
- Wheelchair/Occupant Securement System
- Interior Control Switches
- Custom Ground Effects

## OPTIONAL FEATURES

- Retractable Belt System
- Protective Carpet Mat
- Non-Skid Flooring
- Rubberized Flooring

VISIT BRAUNABILITY.COM, OR CONTACT YOUR LOCAL DEALER FOR MORE INFORMATION

## TRIM LEVELS

With four trim levels — LE, SE, XLE and Limited — plus a choice of a 4-cylinder or V6 engine, you can choose what works for you!

## WHEELS



LE 17-in. 5-spoke alloy wheel



LE, XLE and Limited 18-in. 10-spoke machine-finished alloy wheel



SE 19-in. 6-spoke super chrome-finished alloy wheel



XLE 17-in. 7-spoke machine-finished alloy wheel



Black



Cypress Pearl



Predawn Gray



Salsa Red



Sandy Beach



Silver Sky



South Pacific



Blizzard Pearl

DRIVEN BY THE FREEDOM OF CHOICE

braunability.com Visit our website today for more details and interaction.  
more of the experience

